

# LOUVER INSTALLATION GUIDE



2022.09.06

## WPC LOUVER TUBE



**ATTENTION**

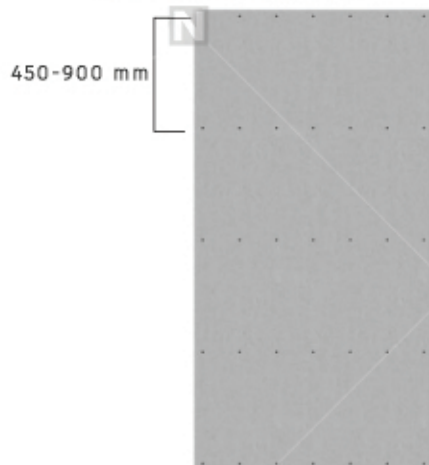
Prior to installing any WPC products, it is recommended that you check with local building codes for any special requirements or restrictions. The installation guide is for illustration purposes only and is not implied to replace a licensed professional. Any construction or use of **NORTwood®** products must be in accordance with all local zoning and building codes. The consumer assumes all risks and liability associated with the construction and use of this product.

# B INSTALLATION STEPS INSTALL TO CONCRETE WALL DIRECTLY

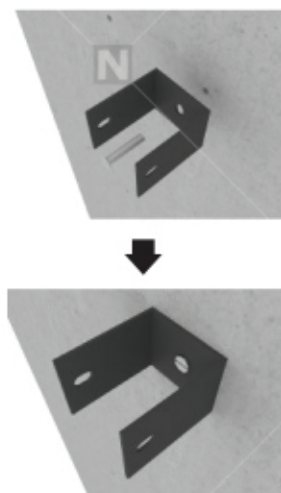


## Louver 100 as an example

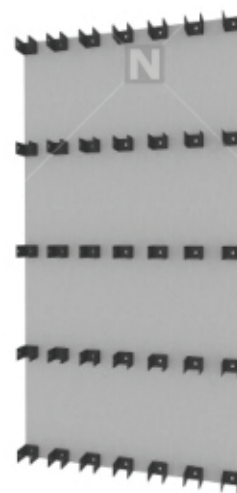
- 1 Pre-drill hole to concrete wall, vertical best distance between every two hole is 450-900 mm. Horizontal distance between two hole will be pre-drilled according to needed distance.



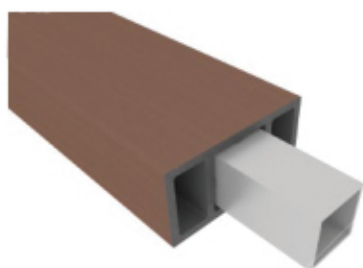
- 2 According to pre-drilled hole, use expansion screw to fix U shape fastener to the concrete wall.



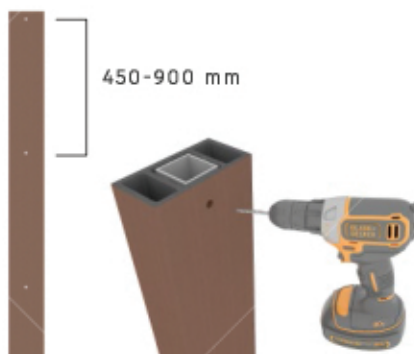
- 3 Reference picture



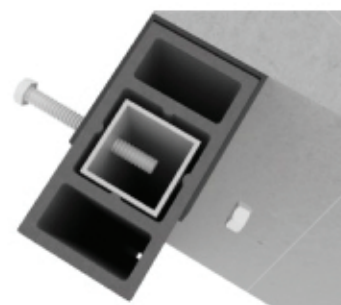
- 4 Insert galvanized square pipe into WPC louver tube, galvanized square pipe should be same length as WPC louver tube.



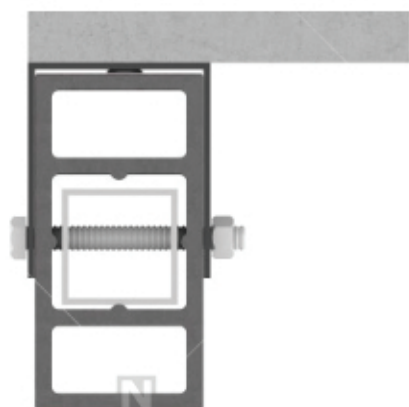
- 5 Pre-drill galvanized square pipe and WPC louver tube at the same time, distance of pre-drill hole should be same distance as pre-drilled hole on wall.



- 6 Put louver tube into the U shape fastener, and then use core screw to fix louver tube to the U shape fastener.



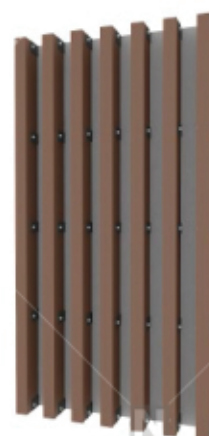
- 7 Tightening core screw till louver tube not looseness.



- 8 The rest can be done in the same manner to fix WPC louver tube.



- 9 Finished installation effect.



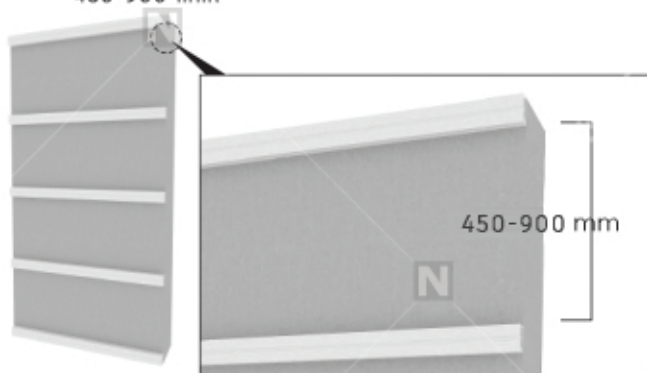
# INSTALLATION STEPS

## INSTALLATION WITH JOIST

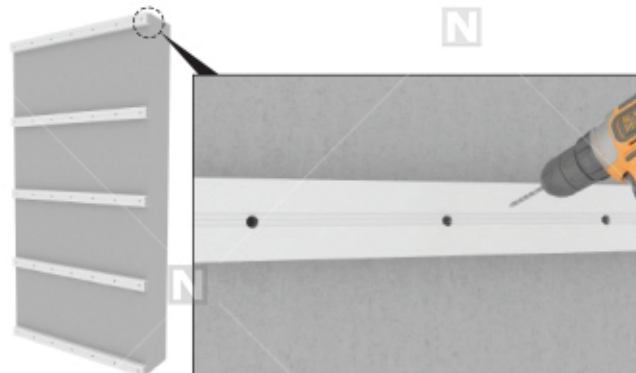
N

Louver 100 as an example

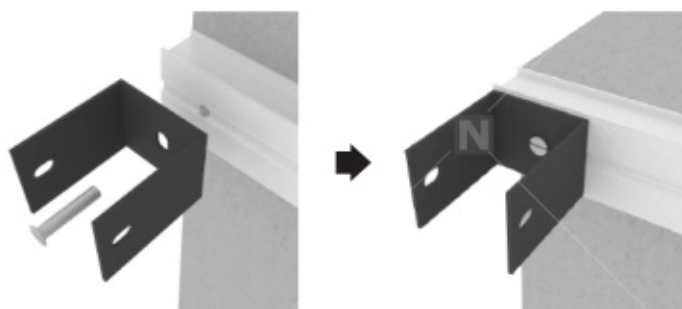
- 1 Install metal joist (Galvanized square pipe or aluminium joist) to concrete wall, best distance between every two metal joist is 450-900 mm.



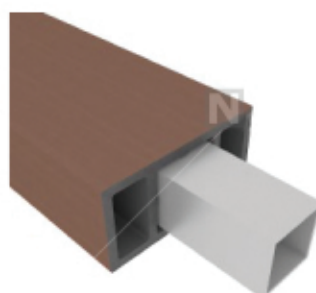
- 2 Pre-drill metal joist horizontally according to needed distance.



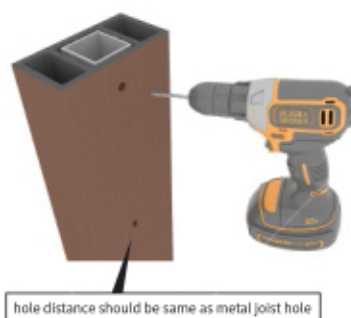
- 3 Through pre-drilled metal joist hole, use expansion screw to fix U shape fastener to the metal joist and concrete wall.



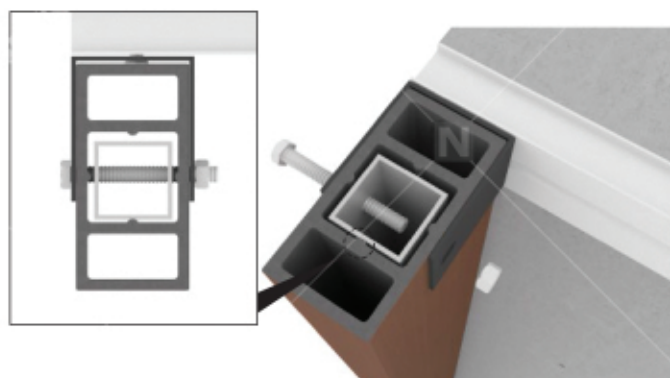
- 4 Insert galvanized square pipe into WPC louver tube, galvanized square pipe should be same length as WPC louver tube.



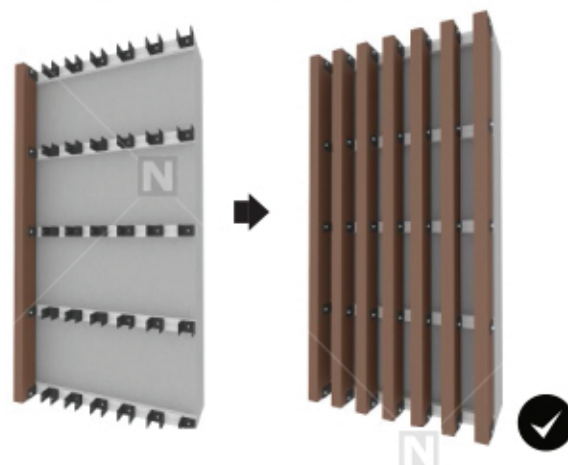
- 5 Pre-drill galvanized square pipe and WPC louver tube at the same time, distance of pre-drill hole should be same distance as metal joist.



- 6 Put louver tube into the U shape fastener, and then use core screw to fix louver tube to the U shape fastener.



- 7 Tightening core screw till louver tube not looseness.





## READ THE INSTALLATION GUIDE ALL SECTIONS CAREFULLY BEFORE YOU START.



### SAFETY WARNING

When dealing with any type of construction project, it is necessary to wear appropriate safety equipment to avoid any risk of injuries. **NORTWOOD®** recommends, but is not limited to the following safety equipment, when handling, cutting and installing **NORTWOOD®** products: gloves, a respiratory protection, long sleeves, pants, and safety glasses.

### TOOLS

Standard woodworking tools can be used. It is recommended that all blades have a carbide tip. Stainless steel or acceptable coated screws and nails are recommended.

### Environment

A clean, smooth, flat, and strong surface is needed to install **NORTWOOD®** products correctly. Please check with local building codes before ever installing any type of products. The products shall be stored on a smooth and tidy floor.

### Planning

Reasonable design and installation planning can ensure quick and smooth installation of **NORTWOOD®** products. Plan a layout before starting installation to ensure the best possible looking for your project. We recommend drawing out a site plan of your proposed project that you intend to do to minimize errors.

### Construction

**NORTWOOD®** products is NOT intended for use as columns, support posts, beams, joist stringers, support against a force, or other primary load-bearing members. It must be supported by a code-compliant substructure.

### Static

Static can also be more prevalent in areas that are of higher altitude because the humidity is lower. For these areas, be careful when using **NORTWOOD®** products with conductive objects such as metal railing and chairs as static shocks might occur more often.

### Ventilation

**NORTWOOD®** products CANNOT be directly installed onto a flat surface. It must be installed onto a substructure, so there is adequate and unobstructed air flow under the products to prevent excessive water absorption.

A minimum of 1" (25mm) of continuous net free area between the products and wall is required for adequate ventilation.

### Heat and Fire

Excessive heat from external sources such as but not limited to fire will cause damage to **NORTWOOD®** products. Therefore, do not install **NORTWOOD®** products near heat sources such as fireplaces.

Low-emissivity glass is designed to prevent passive heat gain within a structure and can cause unusual heat build-up on exterior surfaces, it will lead to heat reflection resulting in the formation of heat source in the surrounding environment. It is recommended that you consult the glass manufacturer in advance for advice on reducing heat reflection.

### Fasteners

When fastening **NORTWOOD®** products, it is recommended to predrill the holes on the profile, the screws that are face fastened should always be driven in at a 90 degree angle to the product's surface.

Use white chalk, straight boards, or string lines as templates for straight lines. NEVER USE COLORED CHALK. Colored chalk will permanently stain **NORTWOOD®** products and are highly not recommended.

Use the screw as shown in the Accessories List. Please use a short section of **NORTWOOD®** product to test the screw effect in advance. The inappropriate screw will appear protruding at the hole.

When choosing which screws/nails to use, always check first with your local home centers and hardware stores to see if they have screws that are engineered specifically for composite wood.

If you are unsure which screw/nail to use, contact your manufacturer for more.

### Accessories list

#### 1 Expansion bolt



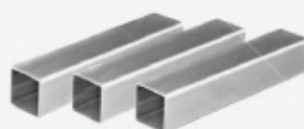
#### 2 U shape fastener



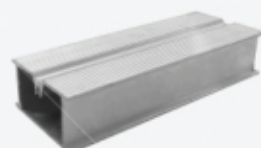
#### 3 Core screw



#### 4 Galvanized square pipe

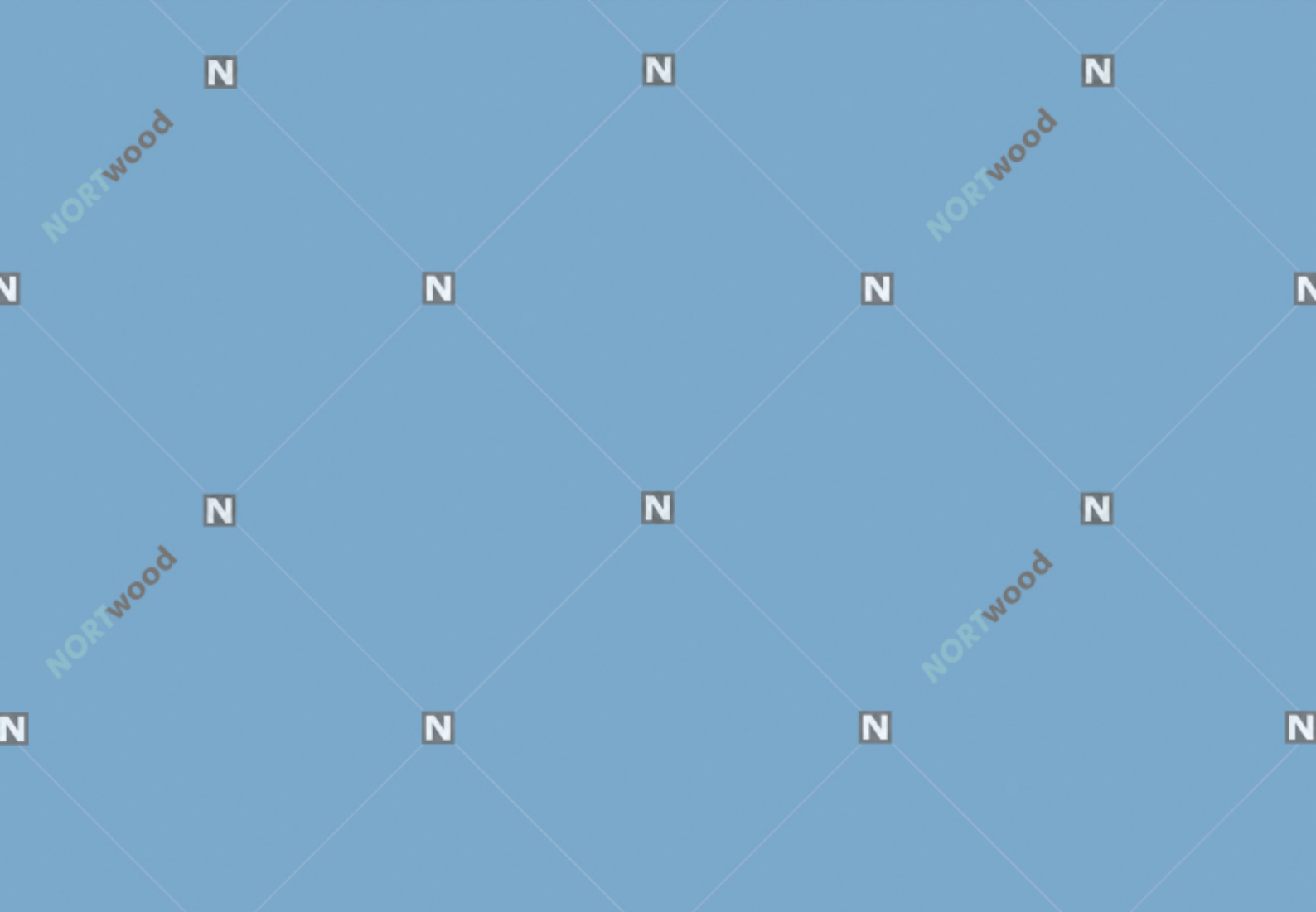


#### 5 Joist





**NORT**wood



*Head Office:*

133 Romina Drive  
Concord, L4K4Z9  
ON, CANADA

[www.nortwood.com](http://www.nortwood.com)