

# NORTwood





P 2

Tools & Safety

P 3

Color Collection

P 4-5-6

**Fluted** Panel

P 7

Subframe Requirements

P 8-9-10-11-12

Installation

P 13-14

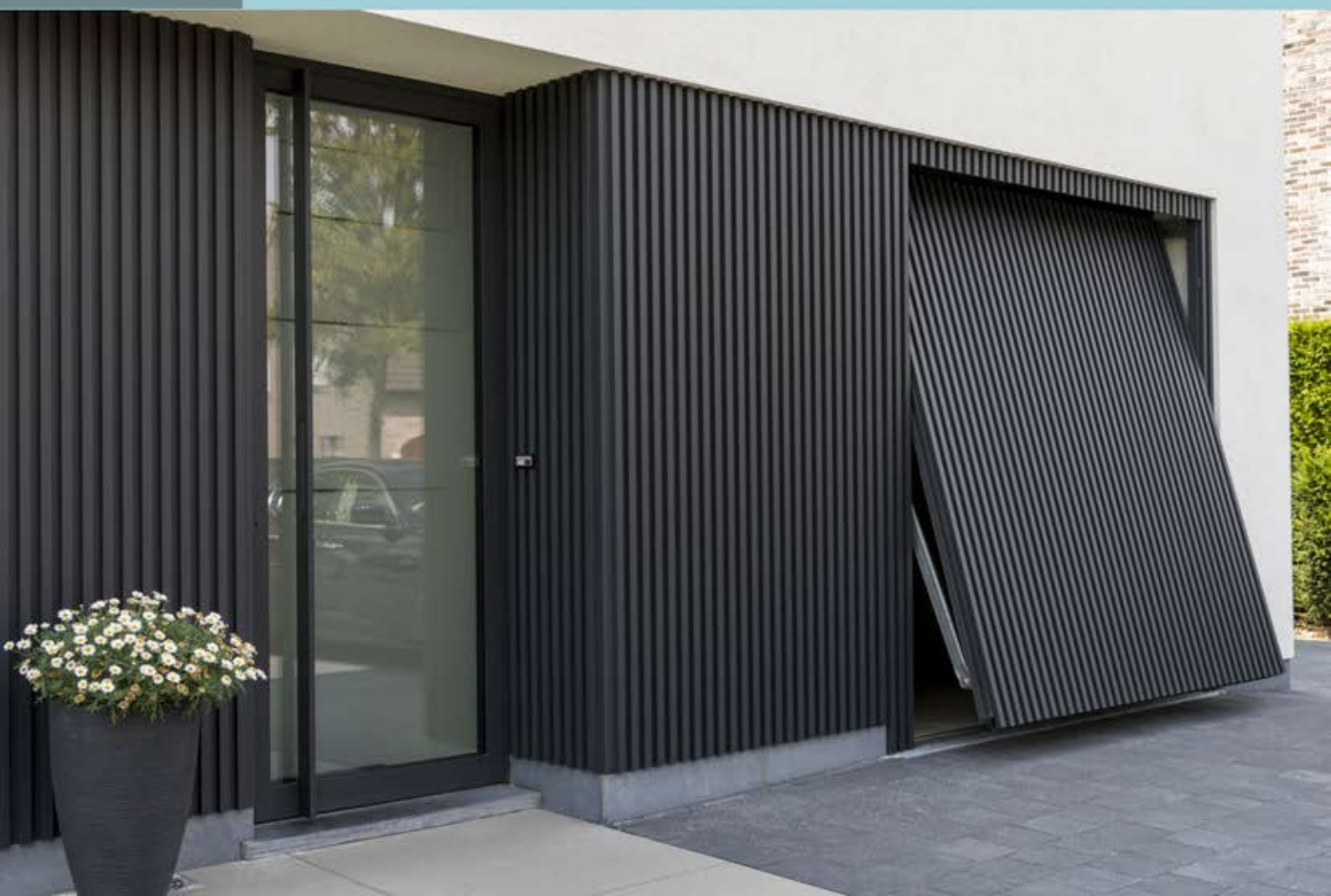
Miter Cut Techniques

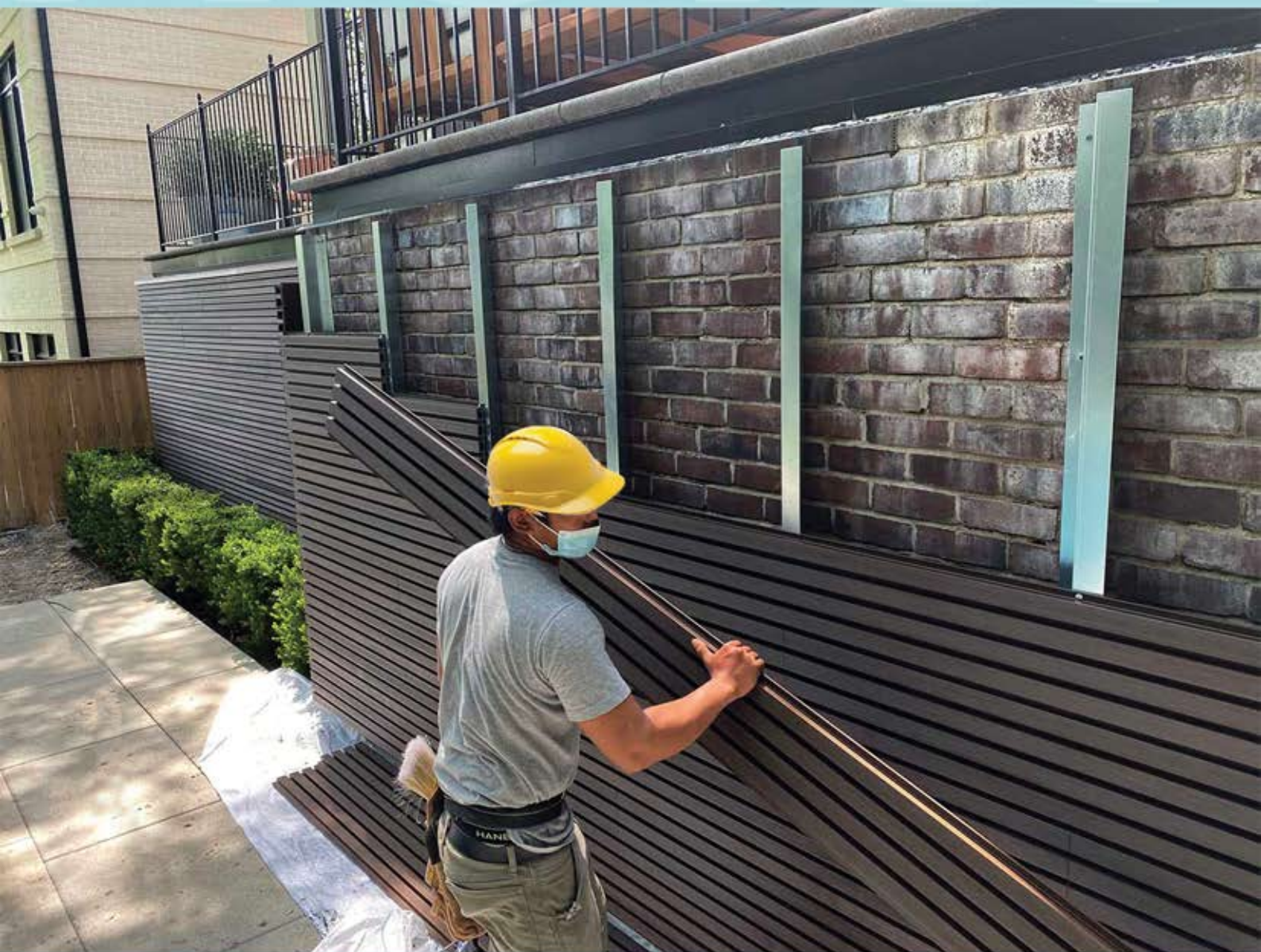
P 15-16-17-18

**nort***Wall* Panel

P 19-20

**Louver** Privacy Screen





## Tools & Safety

Always remember to wear appropriate personal protective equipment (PPE), including eye and hearing protection.

Utilize standard wood-cutting tools such as a table saw and miter saw equipped with a carbide blade (60-80 tooth), a jig saw, a hole saw, and a drill for attachments





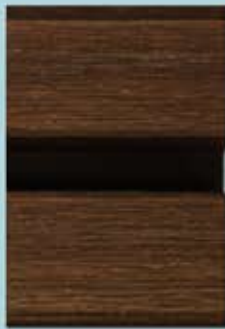
## Color Collection



Charcoal Black



Deep Gray



Norway Teak



Brazil Ipe



Canada Oak



Antique Gray



Elite White



Golden Maple



English Walnut

## Product Description

NORTwood Tongue & Groove Siding is an extruded WPC closed joint rainscreen siding system, designed to be installed horizontally or vertically.

Panels are available in standard lengths of 113" and 144" and as well as trim Components, used for end captures such as along the 10' bottom and top of walls, around windows and doors, corners, end terminations and expansion.

Before installing Nortwood Cladding product, it is recommended that you check with local building codes for any special requirements or restrictions.

All Pictures shown are for illustration purposes only and are not intended to provide a specific work order for installation.

Any construction or use of Nortwood panels must be in accordance with all local zoning and/or building codes.

The consumer assumes all risks and liability associated with the construction and use of this product

### Installing Considerations

Depth of system (measured from substrate to finished face) Components

with clips= 36mm

Components without clips= 26mm



### General questions:

#### What are Fluted Panels?

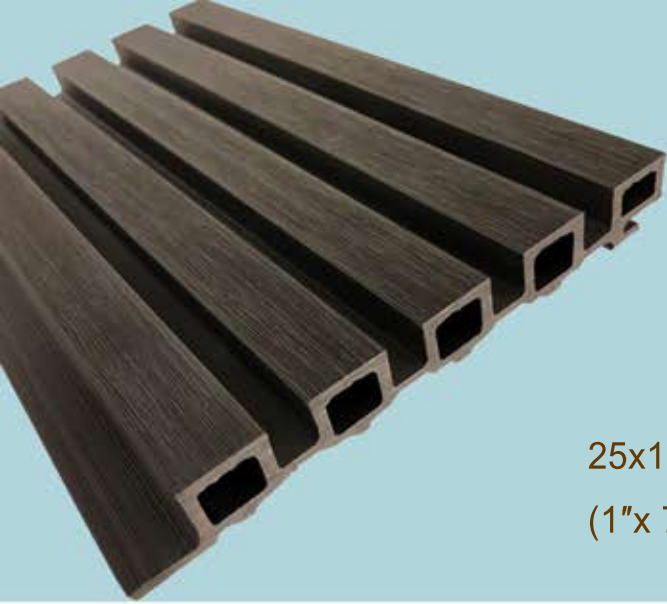
Fluting is a type of moulding finish in which squared moulding is repeated in a pattern. These are more refined versions of slat walls.

#### What Are Fluted Panels Made Of?

Fluted panels are engineered from wood fibres with a polyethylene density, NORTwood plastic composite looks like natural wood with linear or vertical designs. The material is moisture, pest, and mould-resistant.

#### What Are Fluted Panels Used For?

Fluted panels are great as extra décor features on modern homes, hotels lobbies, conference rooms, reception areas, and any space that requires something luxury.



# NFP 25

NORTwood Fluted Panel

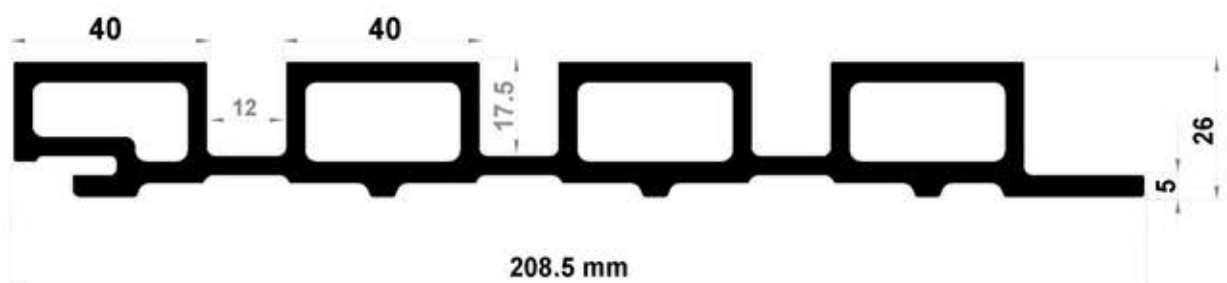
25x193mm x3600mm | 2.3 Kg/m  
(1"x 7 1/2" x 144") | 1.5 lb/ft






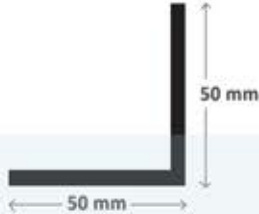


# NFP 40

NORTwood Fluted Panel

26x208mm x3600mm | 2.2 Kg/m  
(1"x 8 1/2" x 144") | 1.33 lb/ft





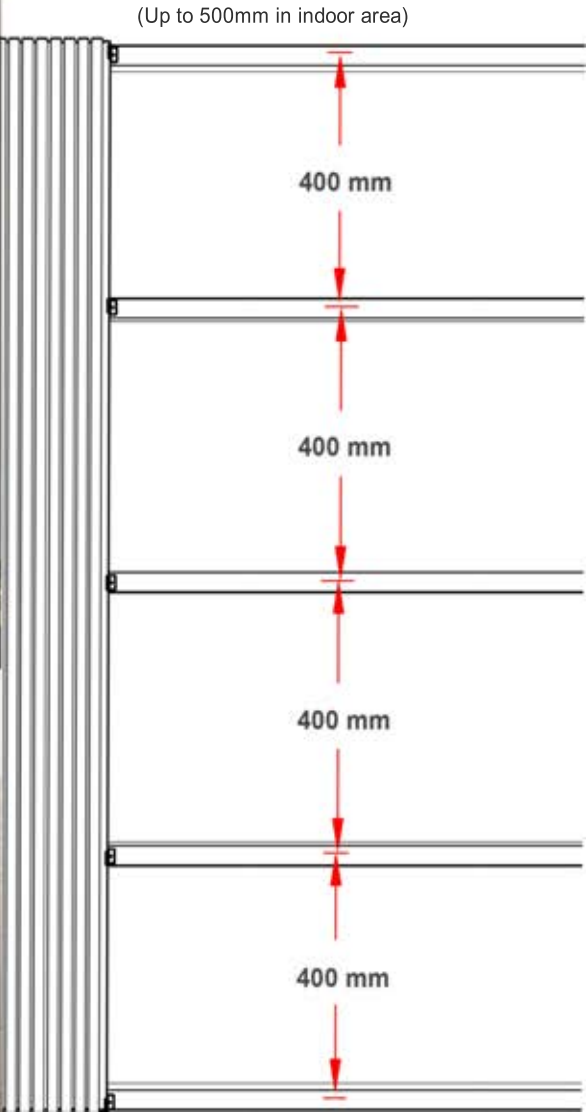
Products	Purpose	
Starter	Used at the starting first panel (If necessary)	
Panel Clip	Clips allow for free movement of the panels, enabling them to expand and contract during thermal changes.	
Corner & End Trim Clip		
L Trim	L shape Outside corner, Door and Windows Trim	
	50x50mm x3000mm   0.5 Kg/m 2" x 2" x 118"	
Corner Trim	Outside Corner Trim, used on the outside corners	
END Trim	End trim is employed when there is a need to abruptly end the panels	
		*This item is optional and can be ignored

Please note that to achieve an architectural exposed look and avoid the need for additional trims, NORTwood panels can be easily cut and mitered for corner applications

# Subframe Requirements

## Wood strapping

The studs need to have a minimum thickness of 1 inch (25 mm). Wood straps should be fixed into position at a maximum of 16 inches (400 mm) centers using a suitable Stainless Steel Countersunk Wood/Masonry screw. All studs need to be flat and leveled against the wall surface use shims if necessary. Architects should be consulted regarding weather barriers and insulation for your project. Where a weather barrier is to be used, it should be a breathable type and must be positioned behind the studs.

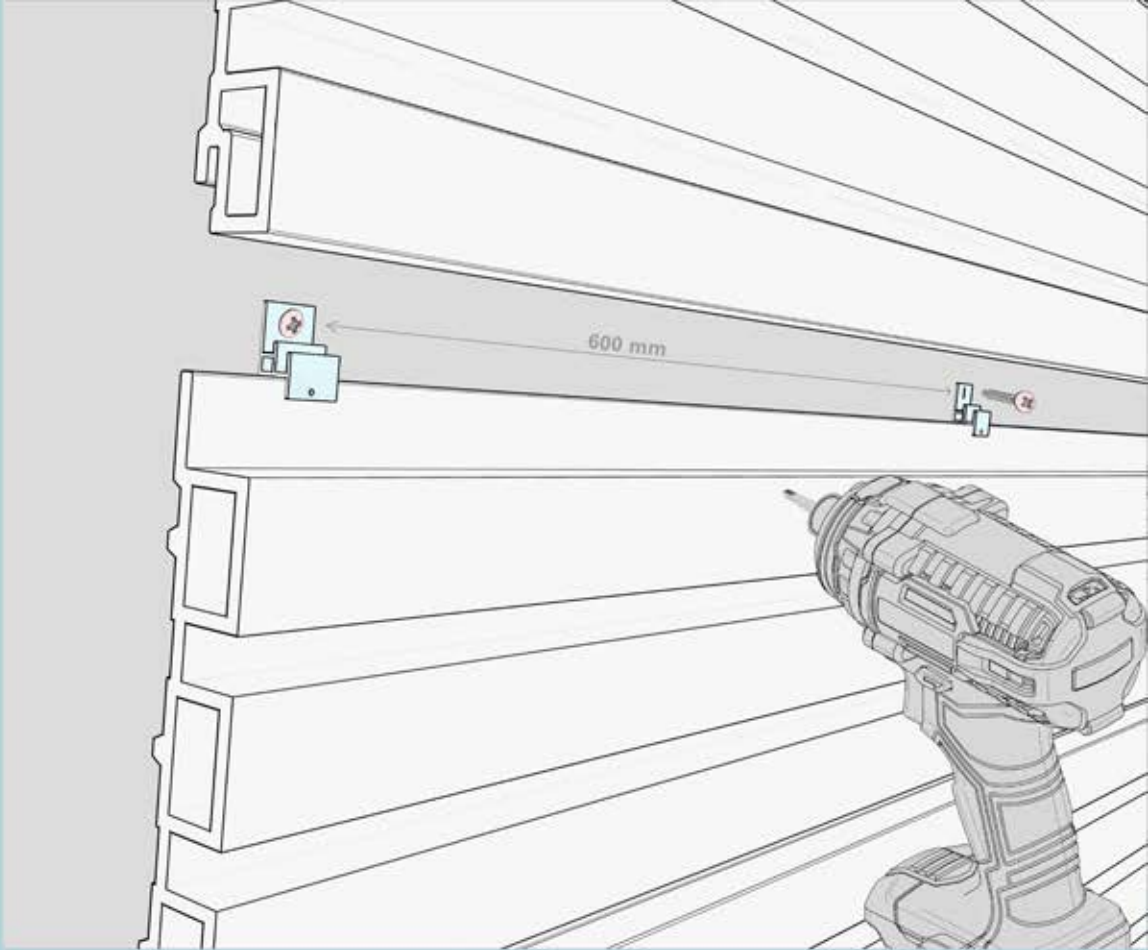




Clips Fastening

Aluminum Clips should be hard fastened every 600mm directly through the panels.

#8 pan-head screws are recommended.

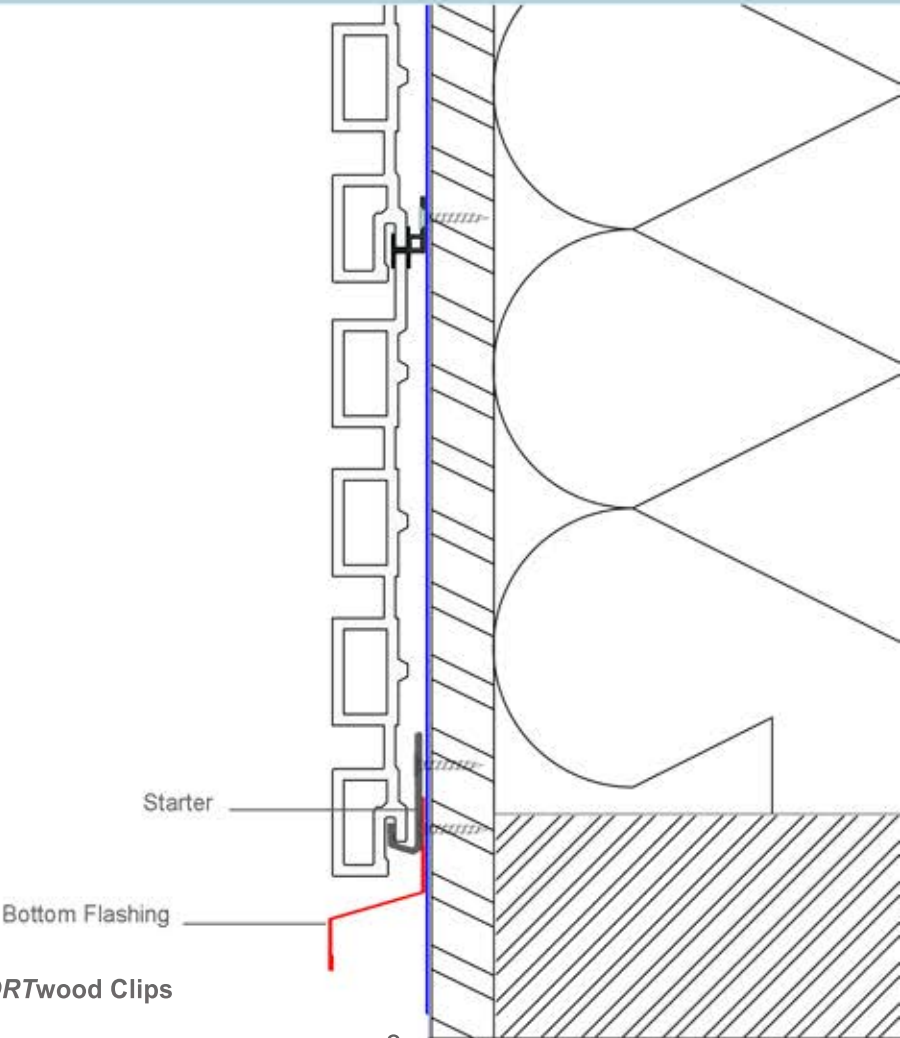


All fasteners should be suitable for exterior use and be compatible with the substrate type.

Used when locking the panels and installing into wood straps

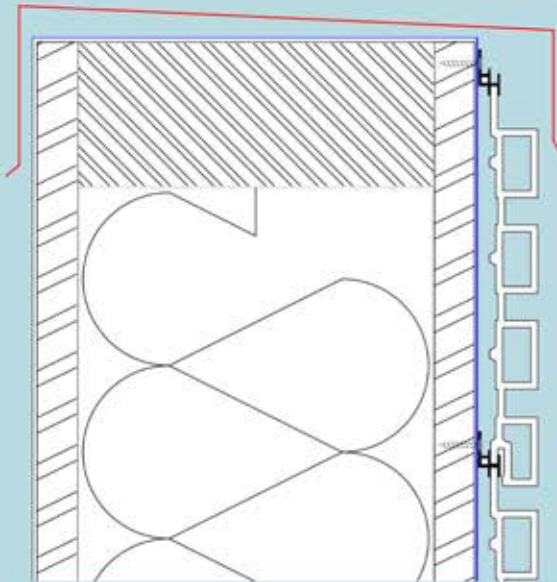


Used when locking the panels and installing into metal studs



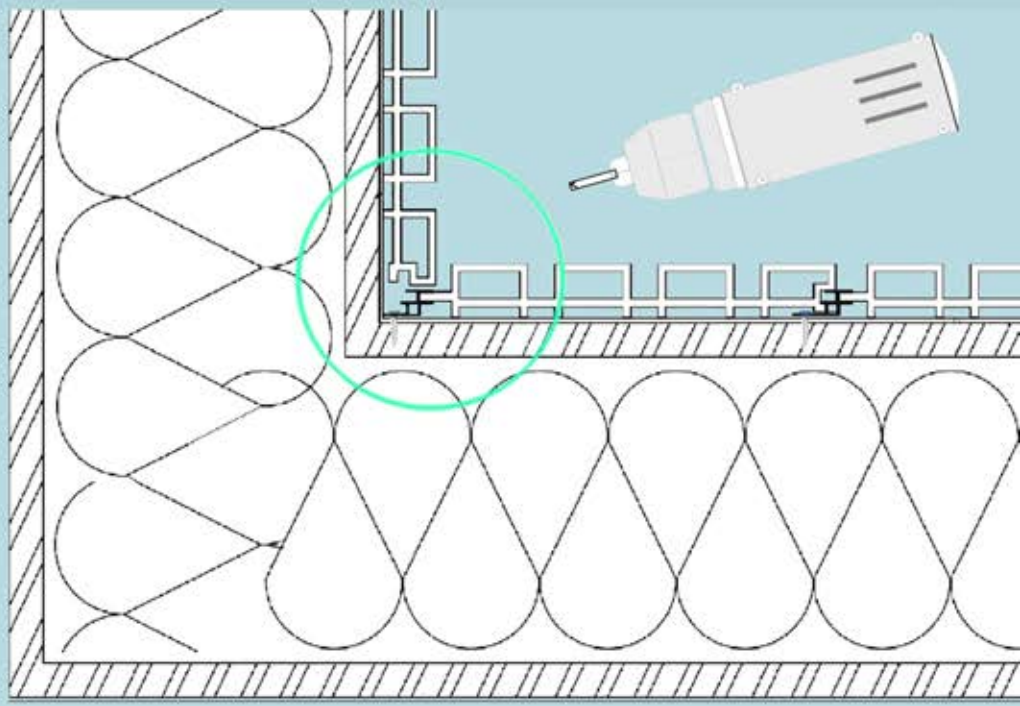
Panels & Starter components are secured using **NORTwood Clips** ( Fastened every 400mm (16”) to the substrate.

Top Panel Detail



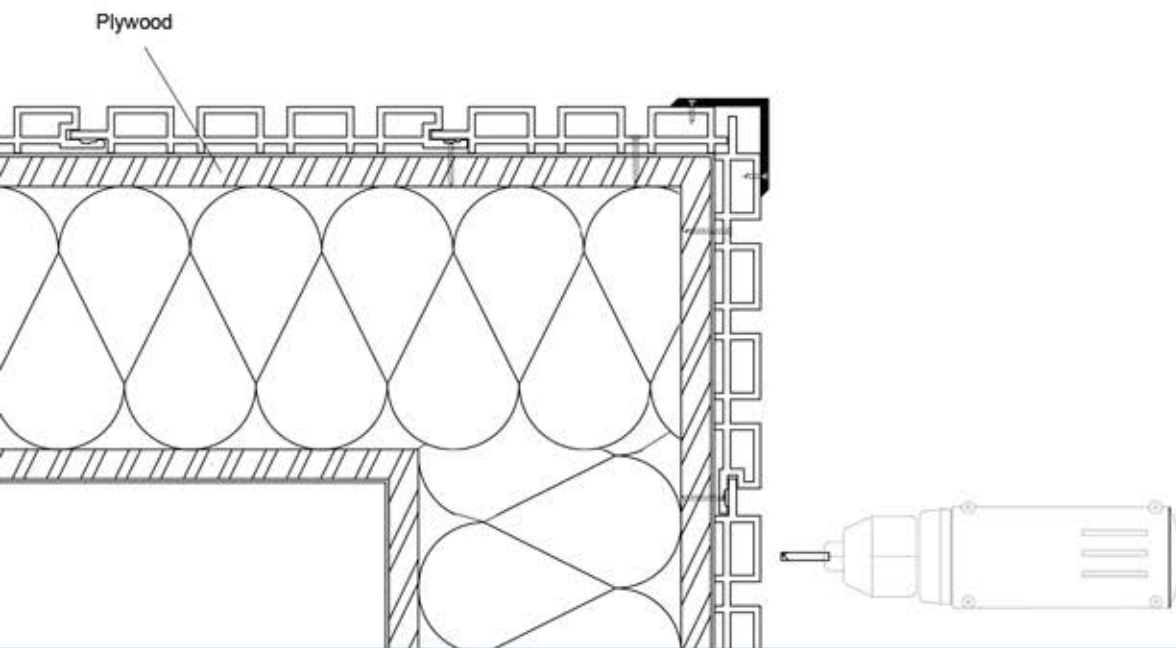
NORT

Inside Corner





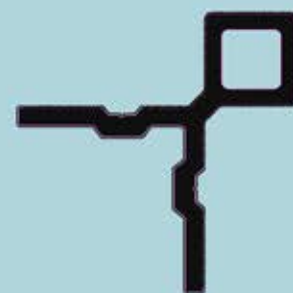
## Architectural Corner Ideas



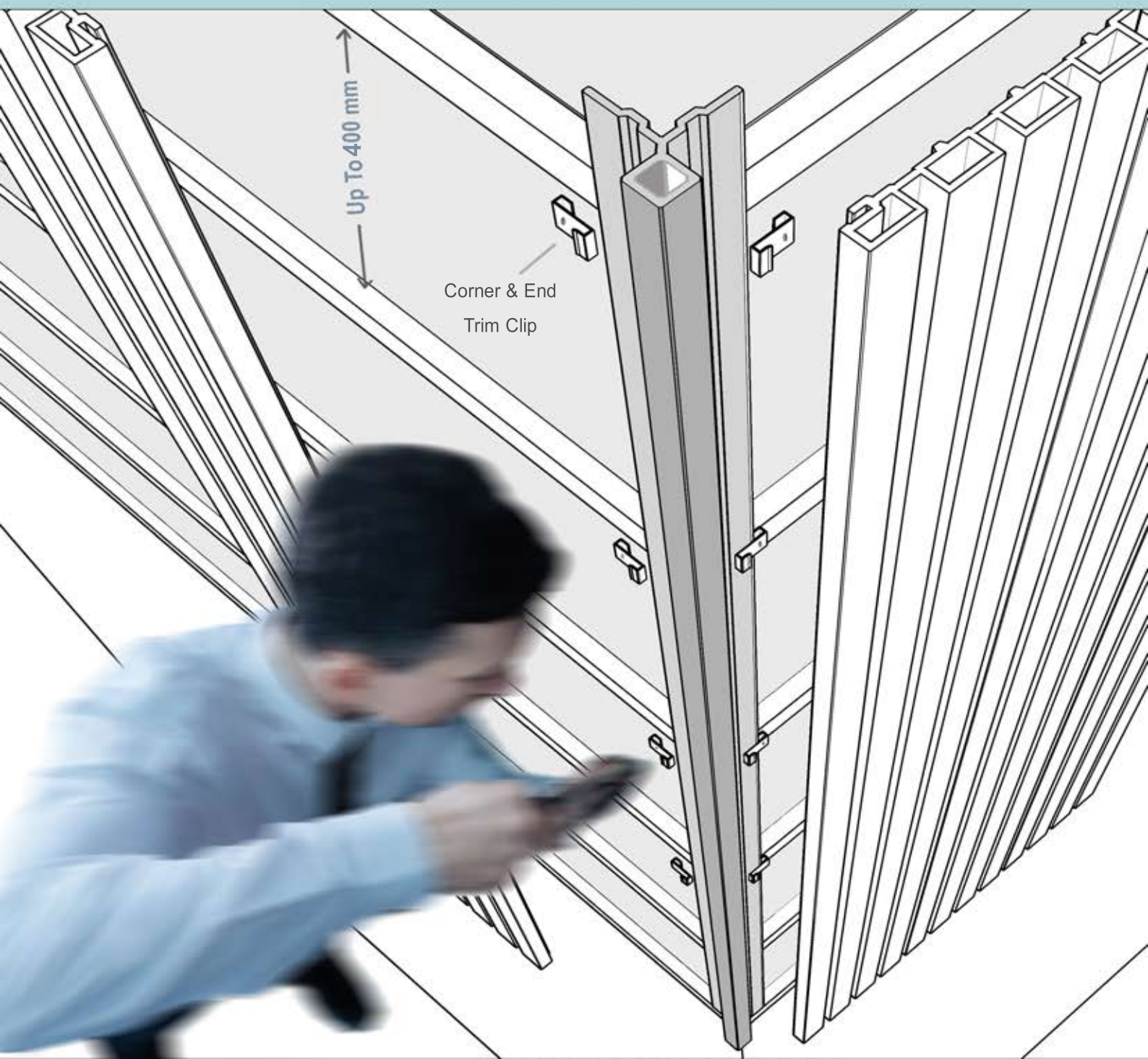
## L Trim Corner



# Pre Made Outside Corner Trims

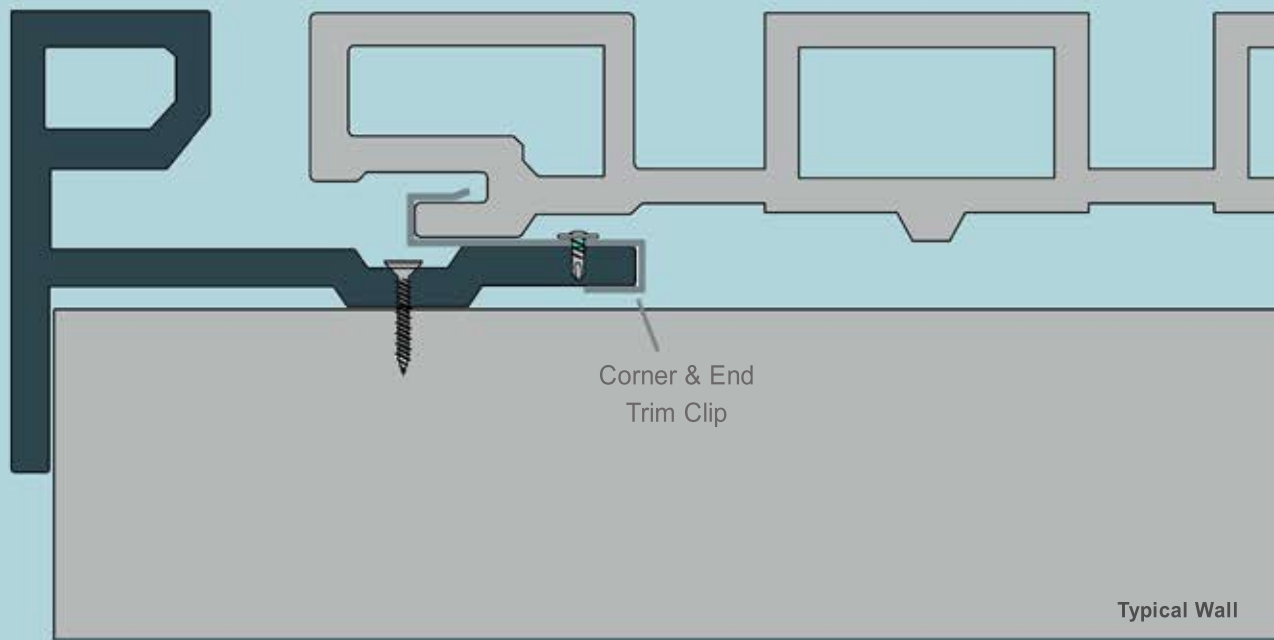


**Place** the trim board on the perpendicular wall and adjust it so that one edge is flush with the surface of the panels. Hold it in place with two finish nails then screw to the wood or steel studs.

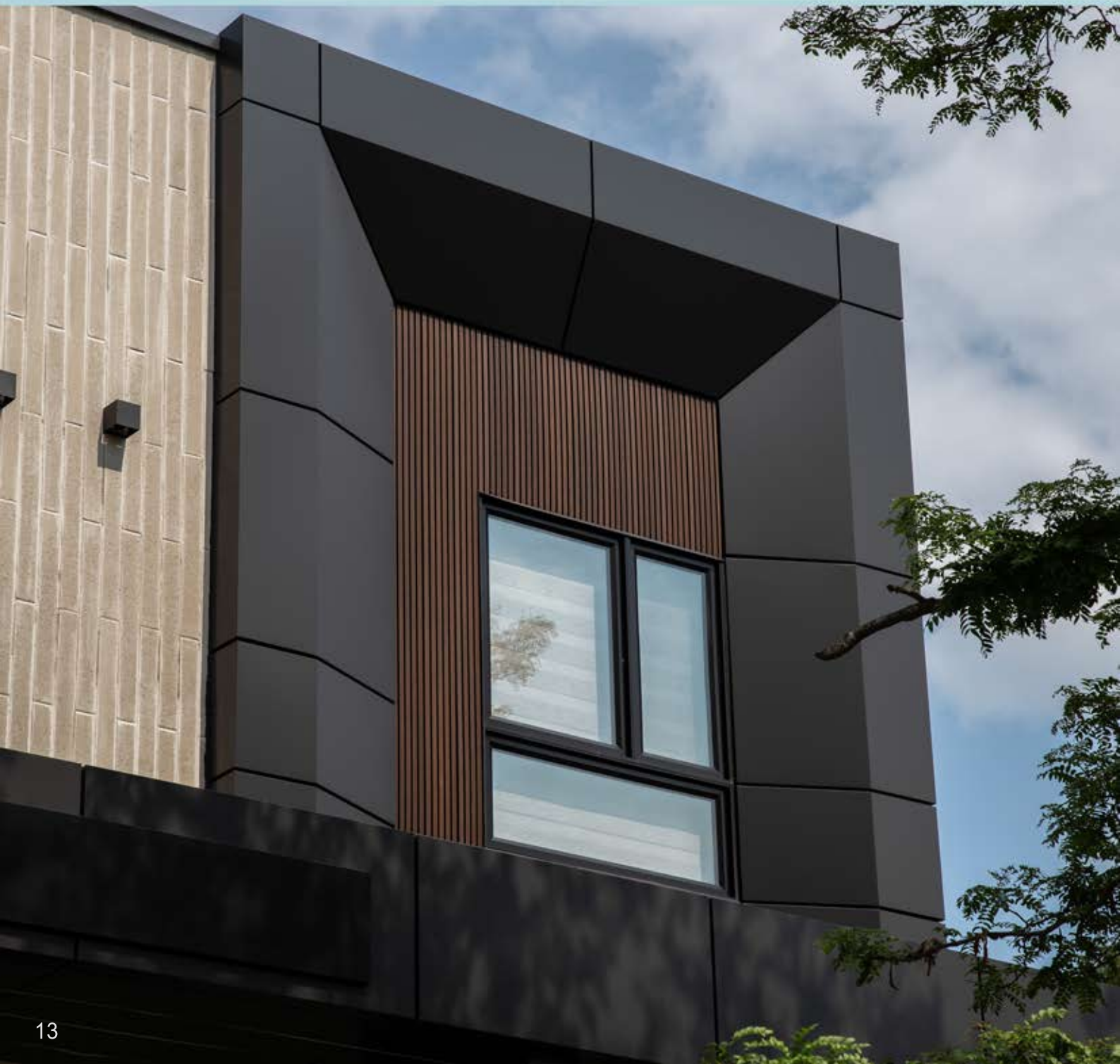








END Trim



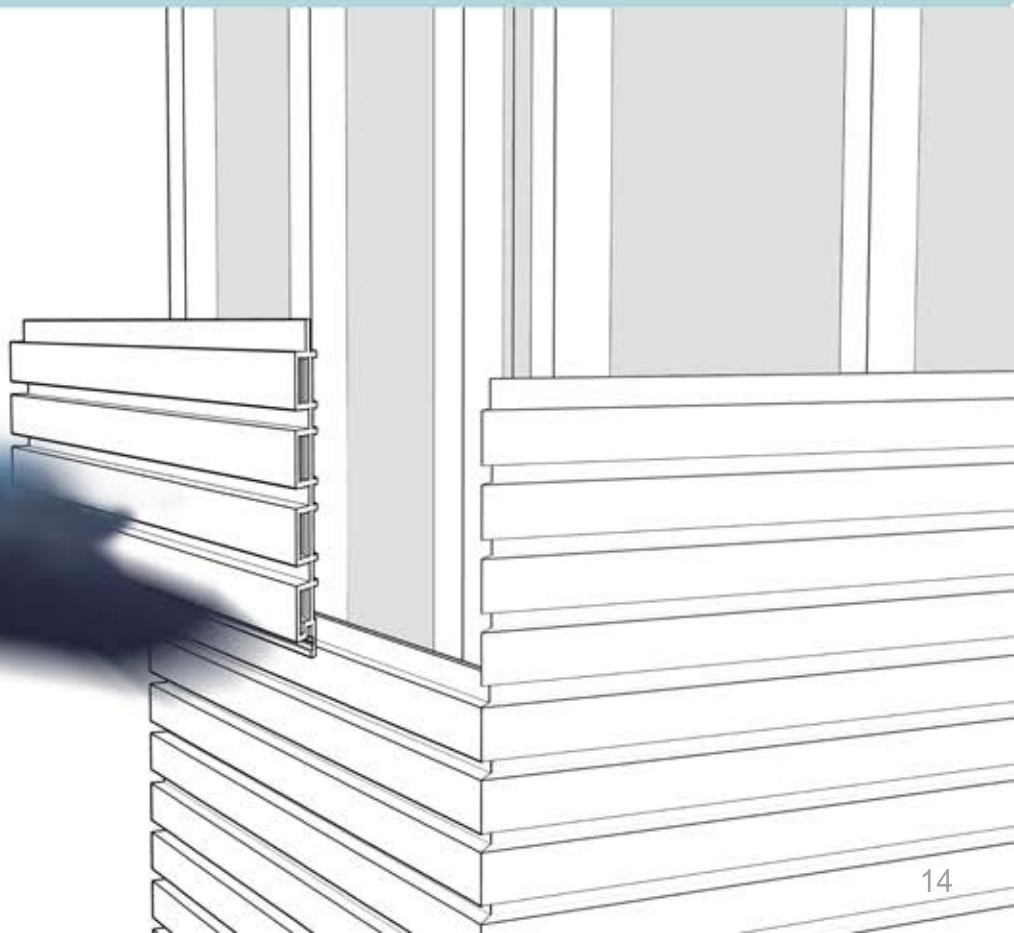


# Miter Cut Corner



To miter a corner, measure the length from the edge of the soffit or outside corner to the base of the wall. Use this measurement to mark a suitable length on a mitered panel with a marker.

Draw a line through the mark using a rafter angle square, then cut the board with a miter saw tool.



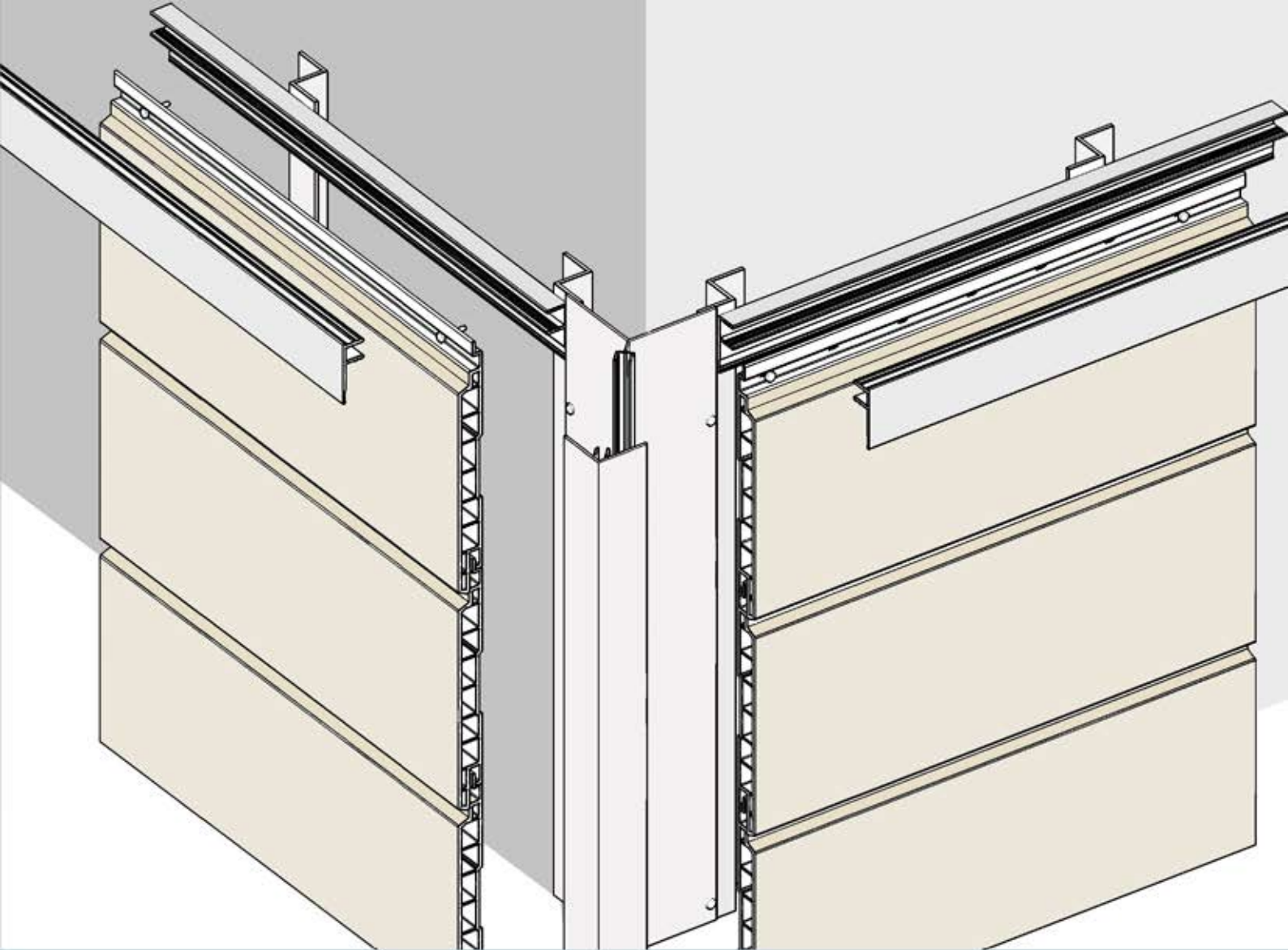


## UPVC nortWALL Panel

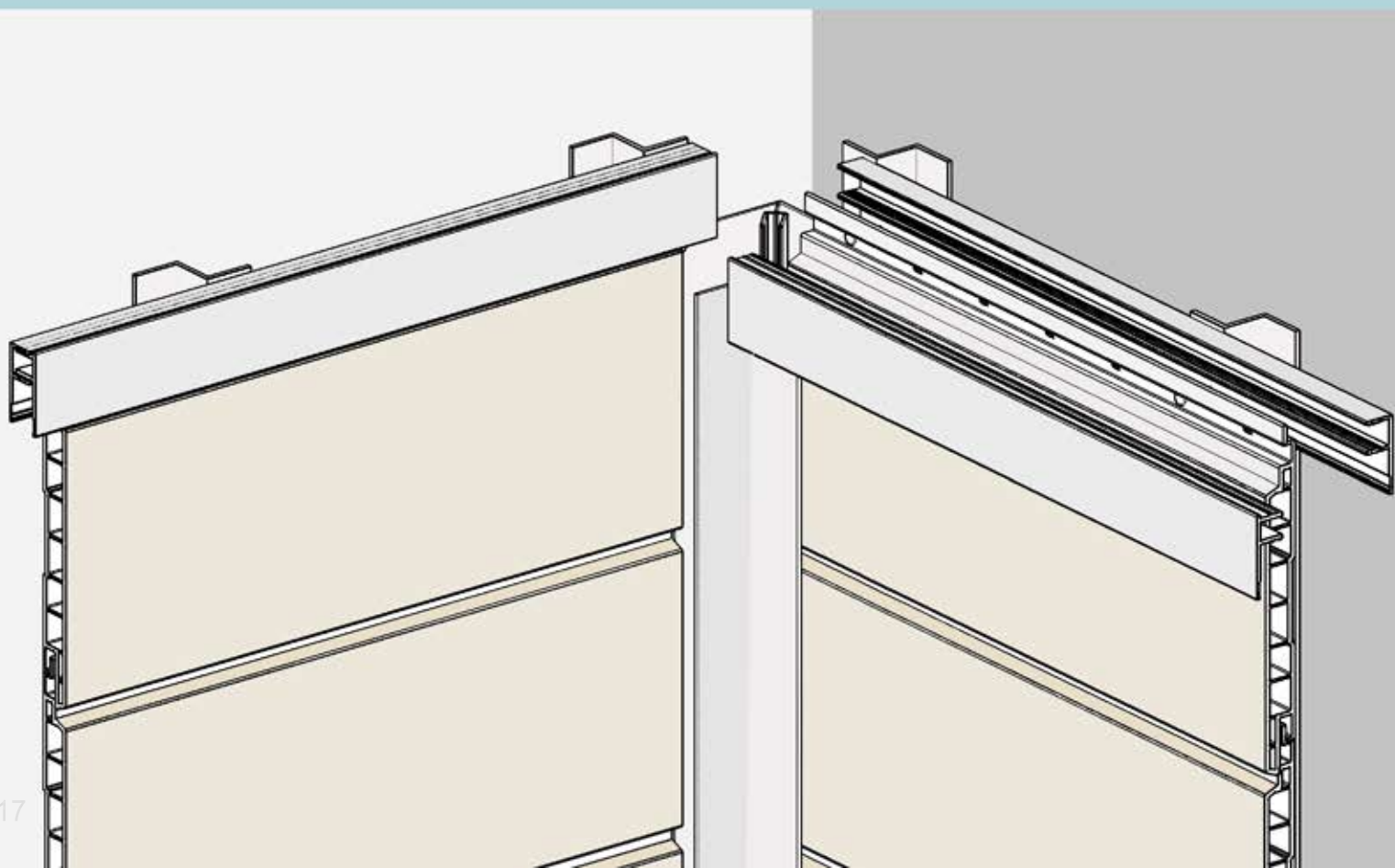




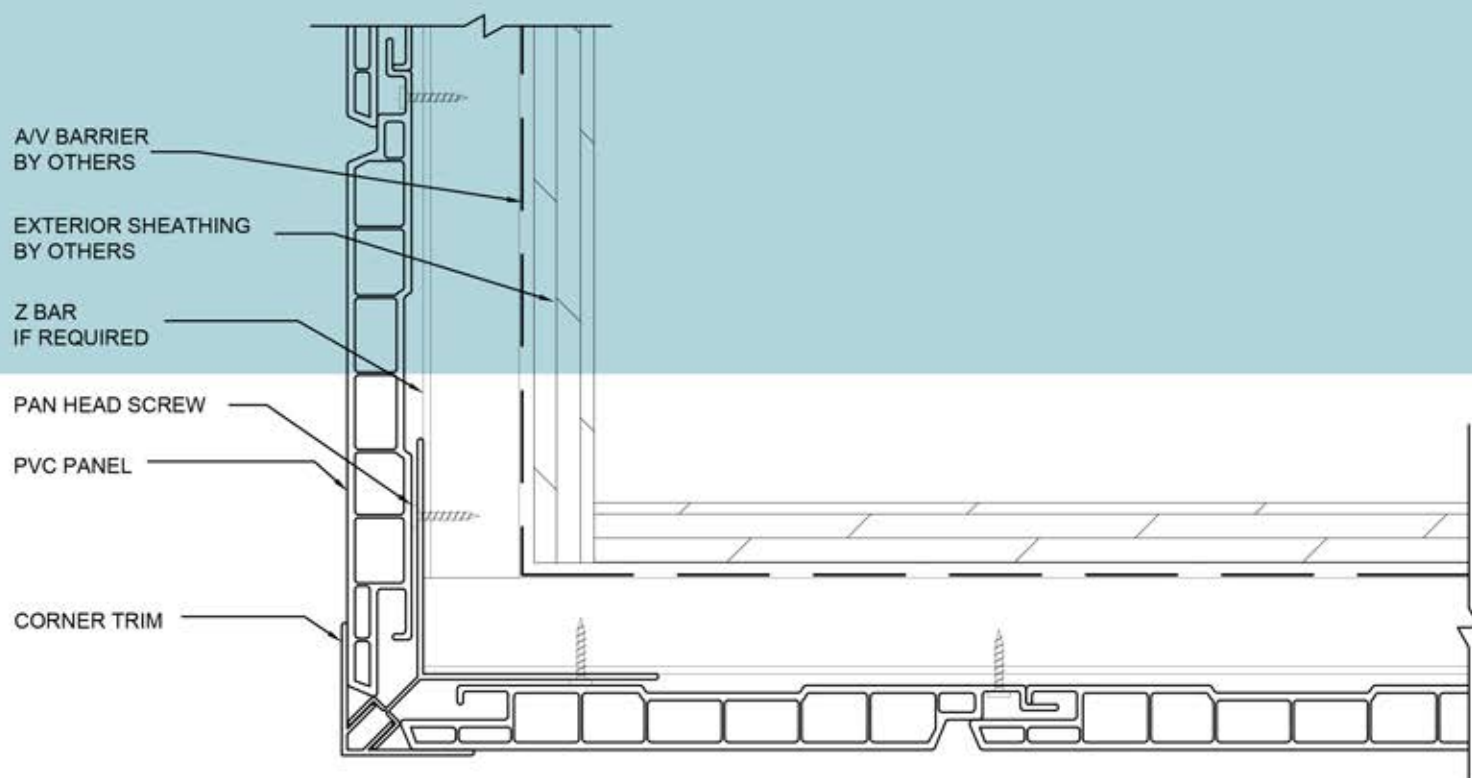




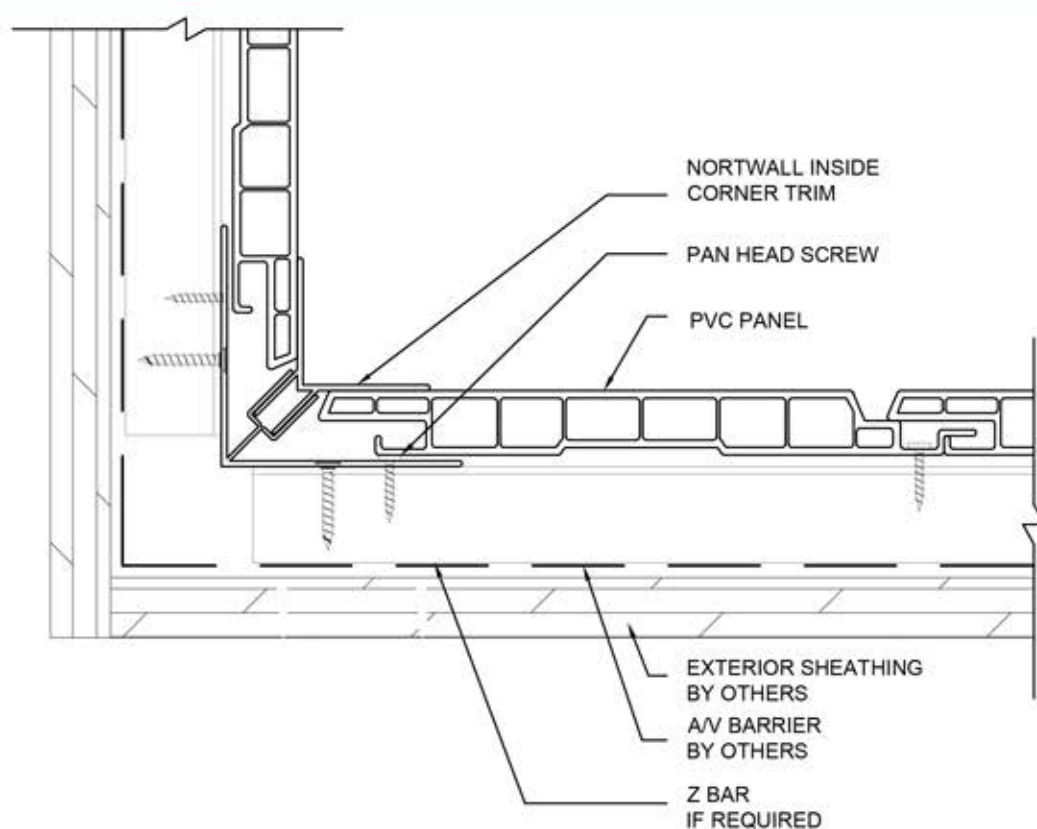
Inside & Outside Corner Trims







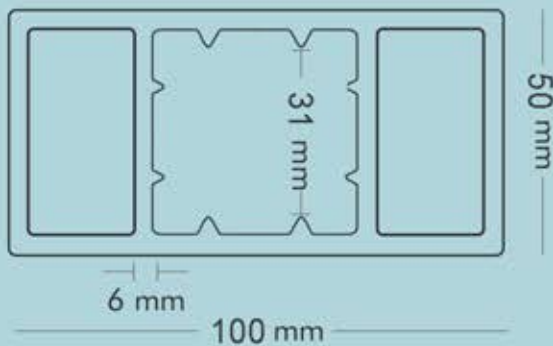
## Inside & Outside corner details



# Louver

## Privacy Screen

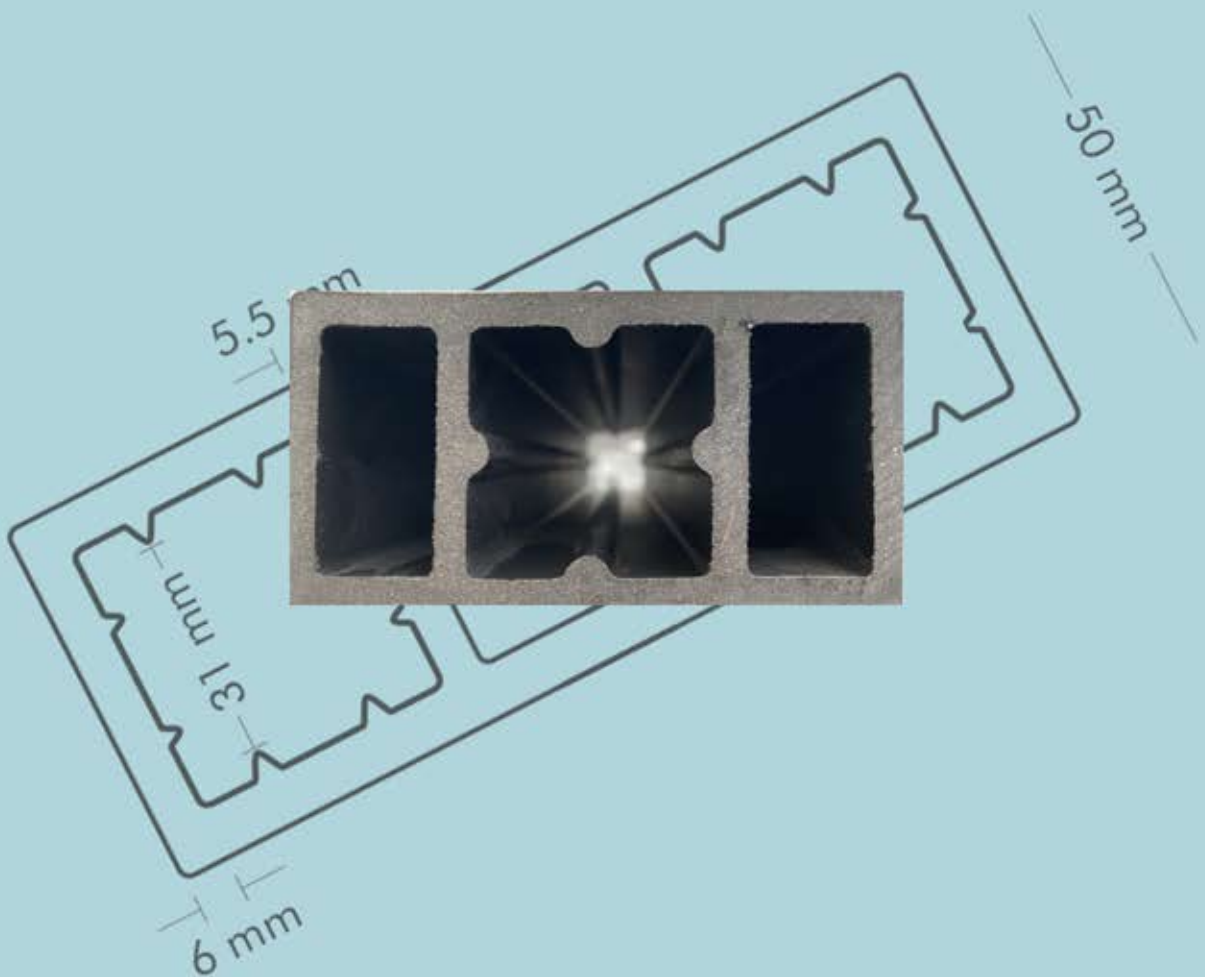
LUV100



50x100mm x3600mm | 2.5 Kg/m  
(2"x 4" x 144") | 1.67 lb/ft






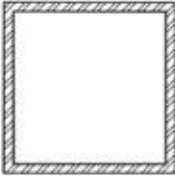







# Accessories



Product	Specs		Part
L Trim	2" x 2" x 120"		
Clips	200 pcs/Box		
Louver Cap	Black Color		
Louver Bracket	Black Color		
M6 Screw	50 pcs/Box		
Metal Support	1.5" x 1.5"		
Starter	1/2" x 120"		

Tech Support: 647.978.5013

Toll-Free: +1.888.308.8898

Email: [info@nortwood.com](mailto:info@nortwood.com)





**NORT** wood



## CANADA

133 Romina Drive  
Concord, L4K4Z9  
ON, Canada  
Tel: +1 647.804.4060

## USA

375 N French Rd  
Amherst, Unit 106  
NY, 14228  
Tel: +1 716.808.0380

Tech Support: [647.978.5013](tel:647.978.5013)

Toll-Free: +1.888.308.8898

Email: [info@nortwood.com](mailto:info@nortwood.com)

[www.NORTwood.com](http://www.NORTwood.com)